

# Bluebox/Western Sigma/N2 302

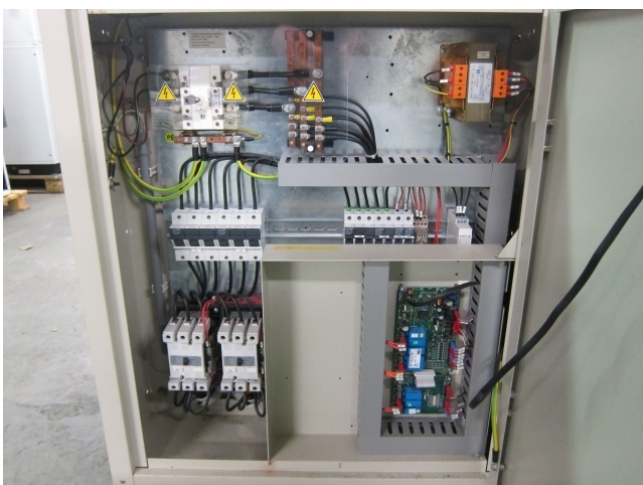
## Specifications

Brand	Bluebox/Western
Type	Sigma/N2 302
Product type	Water Cooled Chiller
Capacity kW	72,4
Capacity Tons	20,6
Refrigerant	Freon
Refrigerant Type	R407 C
Weight in kg.	426
Sizes	1300x900x985 mm (LxWxH)
Remarks	y.o.b 2002 // Comp. 1x Performer SZ 185 and 1x SZ 160 // incl. 4 x heat exchanger



## Description

### Used Bluebox/Western Sigma/N2 302



		De Wel 10 Postbus 236 3870 CE Hoevelaken Holland		
Manufactured by Blue Box S.r.l.				0062
<b>Modello/Model</b> <b>Modell/Modèle</b>				
SIGMA/N2 302				
Tipo refrigerante	IP quadro elettrico	Matricola		
Refrigerant type	IP electrical board	Serial number		
Kältemittel Typ	IP E-Schrank	Matrike		
Type de refrigerant	IP tableau électrique	Matricule		
R407C	X4	014583/22843		
Corrente massima assorbita	Corrente massima di spunto			
Max absorbed current	Max starting current			
Maximalstromverbrauch	Max. Anlaufstrom			
Courant maxi absorbée	Courant maxi démarrage			
70 A	210 A			
Tensione-Fasi-Frequenza	Tensione circuiti ausiliari			
Voltage-Phases-Frequency	Auxiliary circuit voltage			
Spannung-Phases-Frequenz	Steuerspannung			
Tension-Phases-Fréquence	Tension circuits auxiliaires			
400V 3 ~ 50Hz	230-24V ~ 50Hz			
Numero circuiti refrigerante	Press. max refriger. alta/bassa			
Refrigerant circuit number	Max. Refrig. pressure high/low			
Anzahl des Kältemittelkreislaufes	Max. n/n Kältemittelbetriebsrück			
Numero circuits refrigerant	Pression maxi refriger. haute/basse			
2	3000 2500 kPa			
	30,00 25,00 bar			
Press. massima circuito idraulico	Data di produzione			
Max. Hydraulic circuit pressure	Manufacturing date			
Max. Druck im Hydraul. Kreislauf	Erstellungsdatum			
Pression maxi circuit hydraulique	Date de fabrication			
600 kPa	26/06/2003			
6,00 bar				
Carica refrigerante per circuito(kg)/Refrigerant charge per circuit(kg) Kältemittelfüllung Kreislauf(kg)/Charge de refrigerant chaque circuit(kg)				
C1 3	C2 2,6	C3	C4	